

PLACERING AF TREMMERUM - BYGNING D



C · E · R · E · S
P · A · R · K

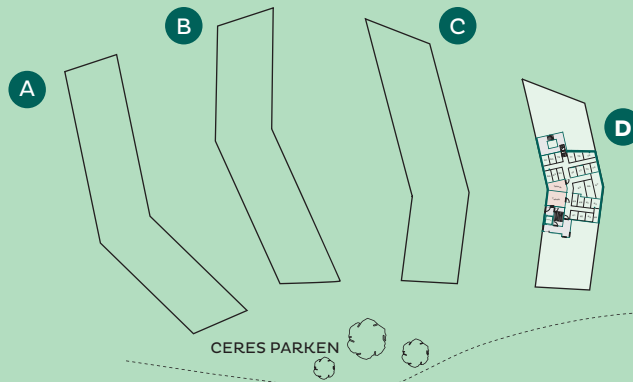


NUMRENE PÅ PLANEN INDIKERER,
HVILKET LEJLIGHEDSNUMMER
TREMMERUMMET TILHØRER

* PART. = PARTERRE

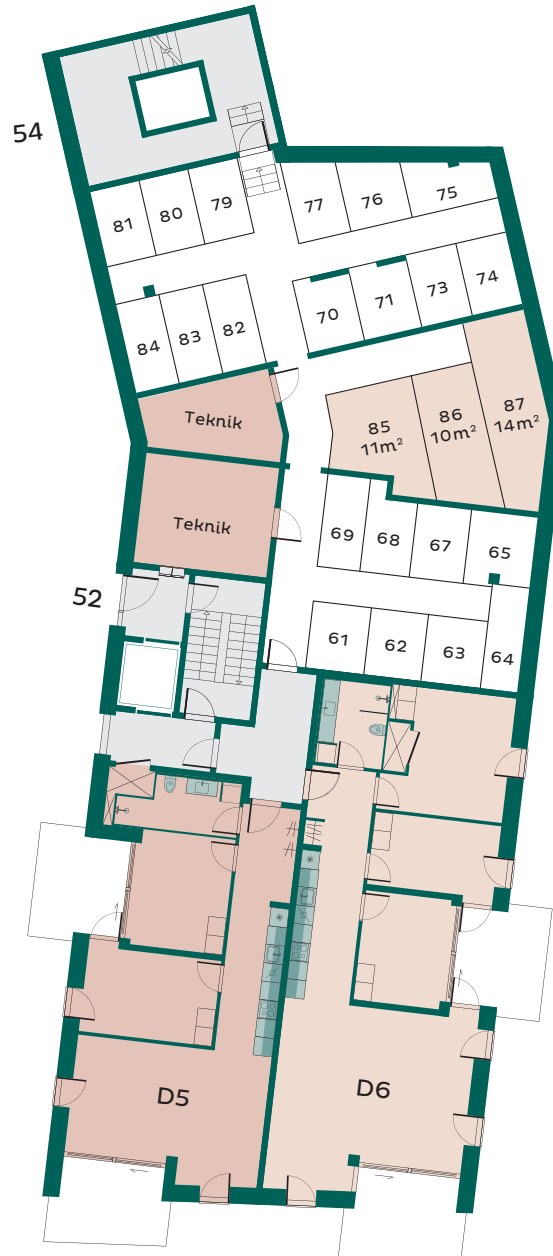
CERES PARK

Ceres Byen 52, 54
Étage part.*





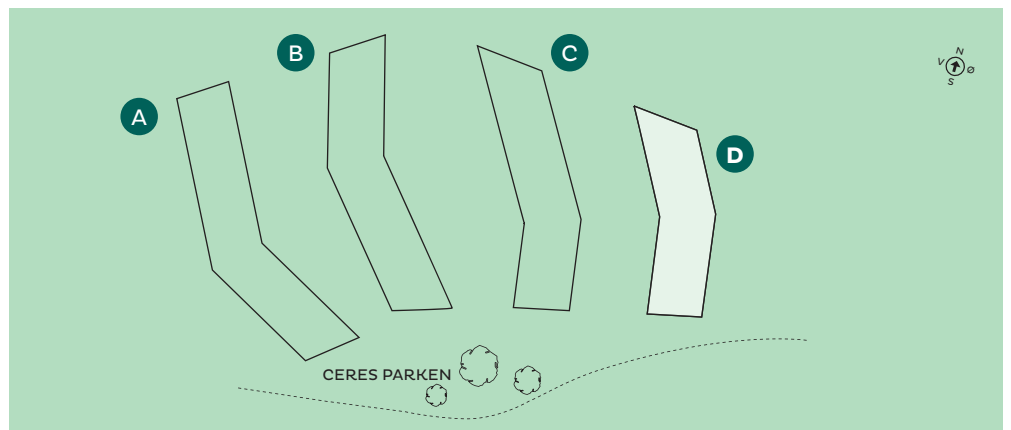
C · E · R · E · S
P · A · R · K



* PART. = PARTERRE

CERES PARK

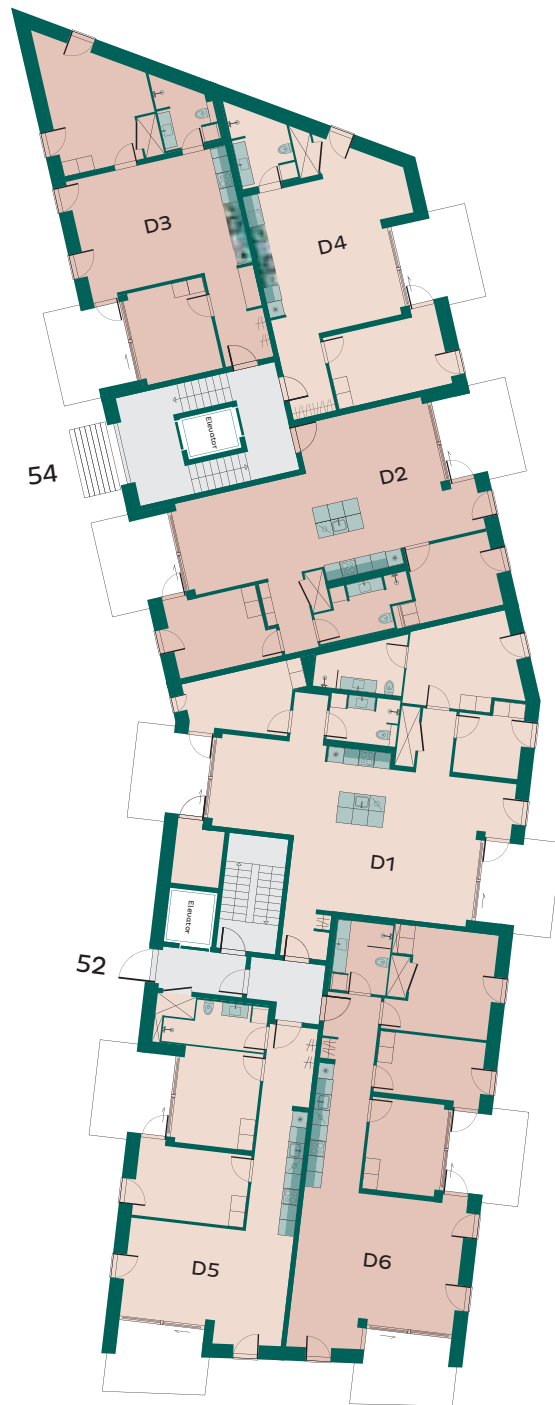
Ceres Byen 52, 54
Etage part.*



BYGNING D / ETAGE: ST., 1., 2.

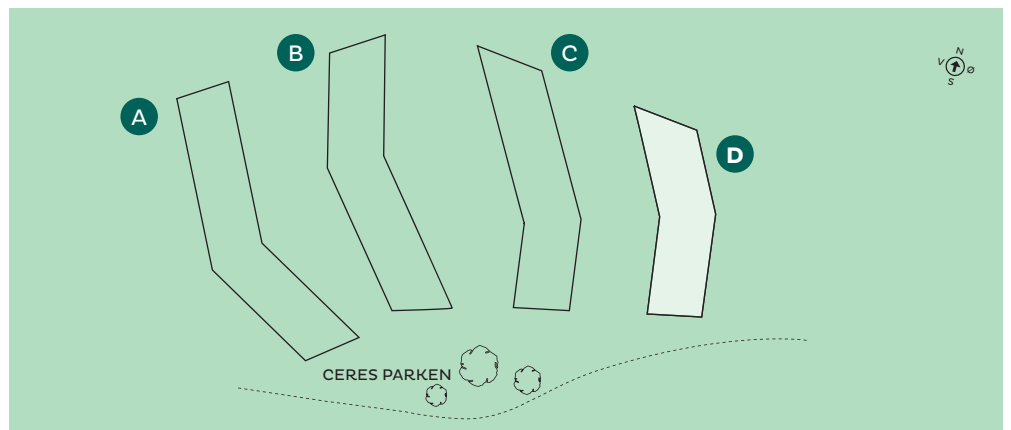


C · E · R · E · S
P · A · R · K



CERES PARK

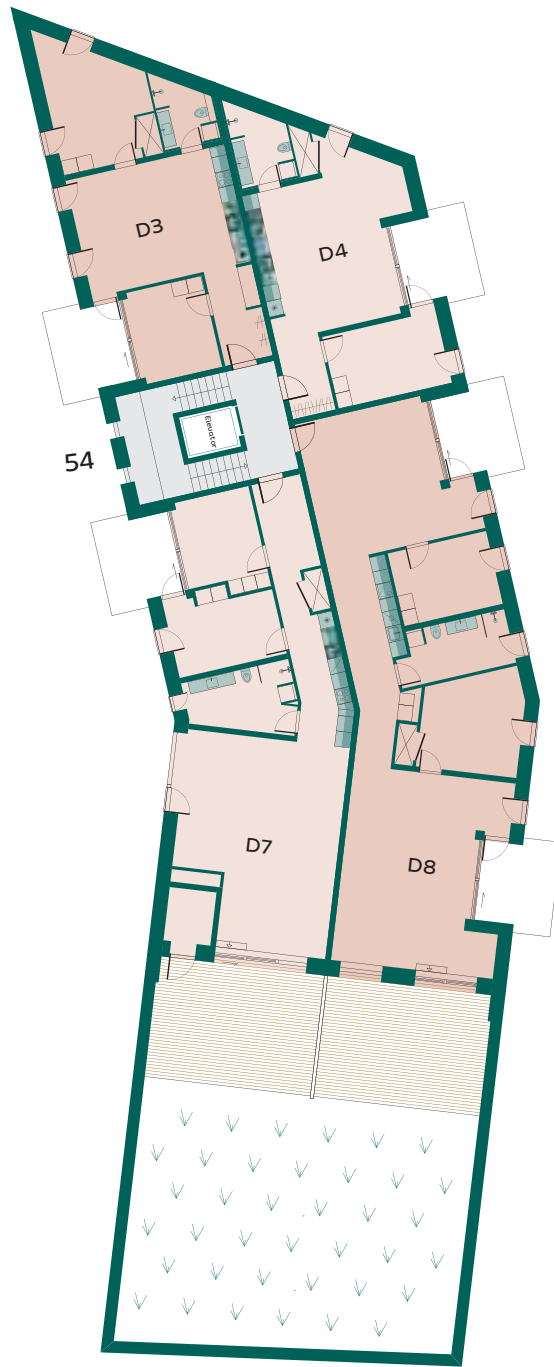
Ceres Byen 52, 54
Etage st., 1., 2.



BYGNING D / ETAGE: 3

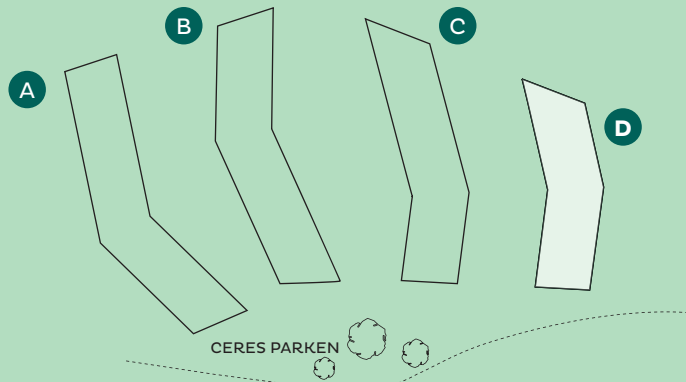


C · E · R · E · S
P · A · R · K



CERES PARK

Ceres Byen 54
Etage 3



BOLIGTYPE: D1



C · E · R · E · S
P · A · R · K



SIGNATURFORKLARING:

- VM = VASKEMASKINE
- TT = TØRRETUMBLER
- T = TEKNIK
- * = KØLESKAB
- Ø = OPVASKEMASKINE
- H = HØJSKAB
- = PLACERING AF LEJLIGHED

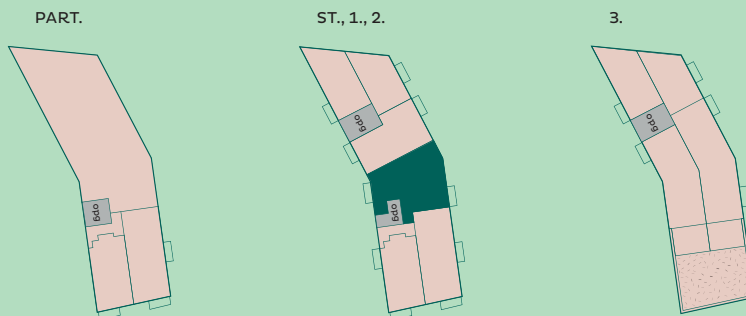


CERES PARK

Ceres Byen 52

Etage st., 1., 2.
 Boligtype D1
 Lejlighed nr. 66, 72, 78
 BBR-areal 137 m²
 Altan/terrasse 10 + 10 m²

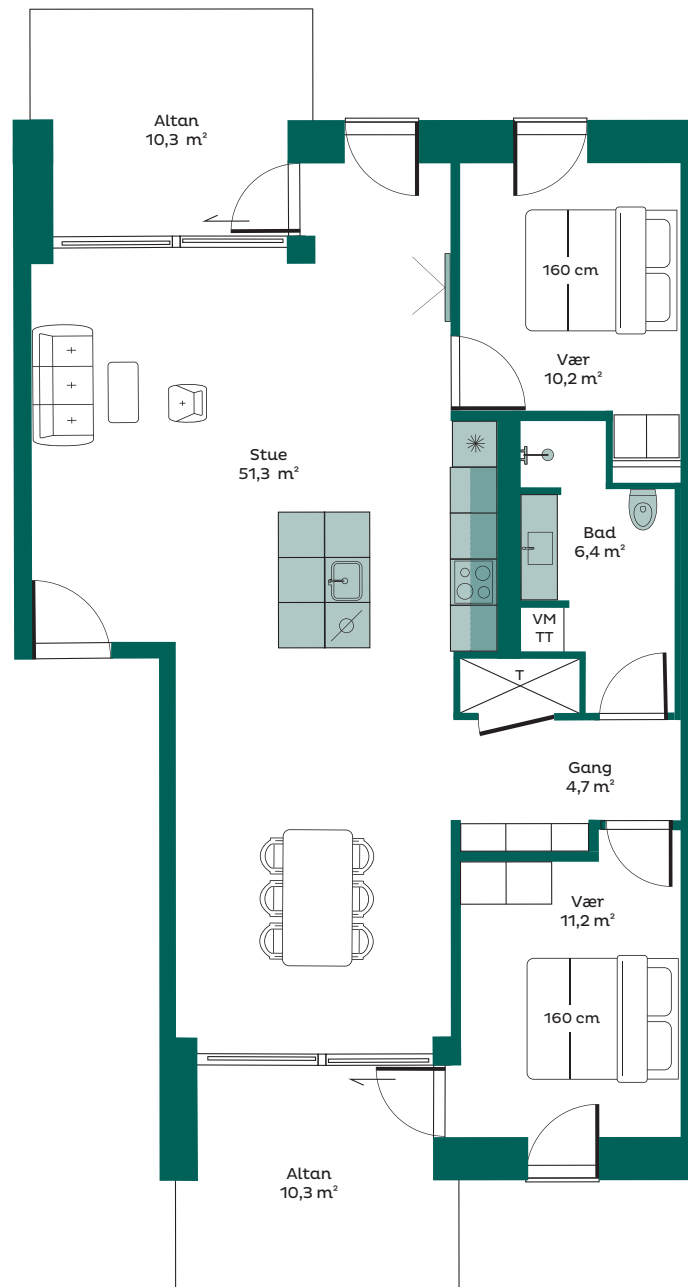
ETAGEOVERSIGT BYGNING D



BOLIGTYPE: D2



C · E · R · E · S
P · A · R · K



SIGNATURFORKLARING:

- VM = VASKEMASKINE**
- TT = TØRRETUMBLER**
- T = TEKNIK**
- * = KØLESKAB**
- Ø = OPVASKEMASKINE**
- H = HØJSKAB**
- = PLACERING AF LEJLIGHED**



CERES PARK

Ceres Byen 54

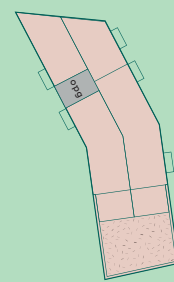
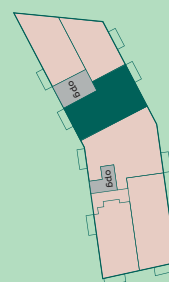
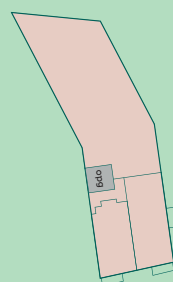
Etage st., 1., 2.
 Boligtype D2
 Lejlighed nr. 65, 71, 77
 BBR-areal 109 m²
 Altan/terrasse 10 + 10 m²

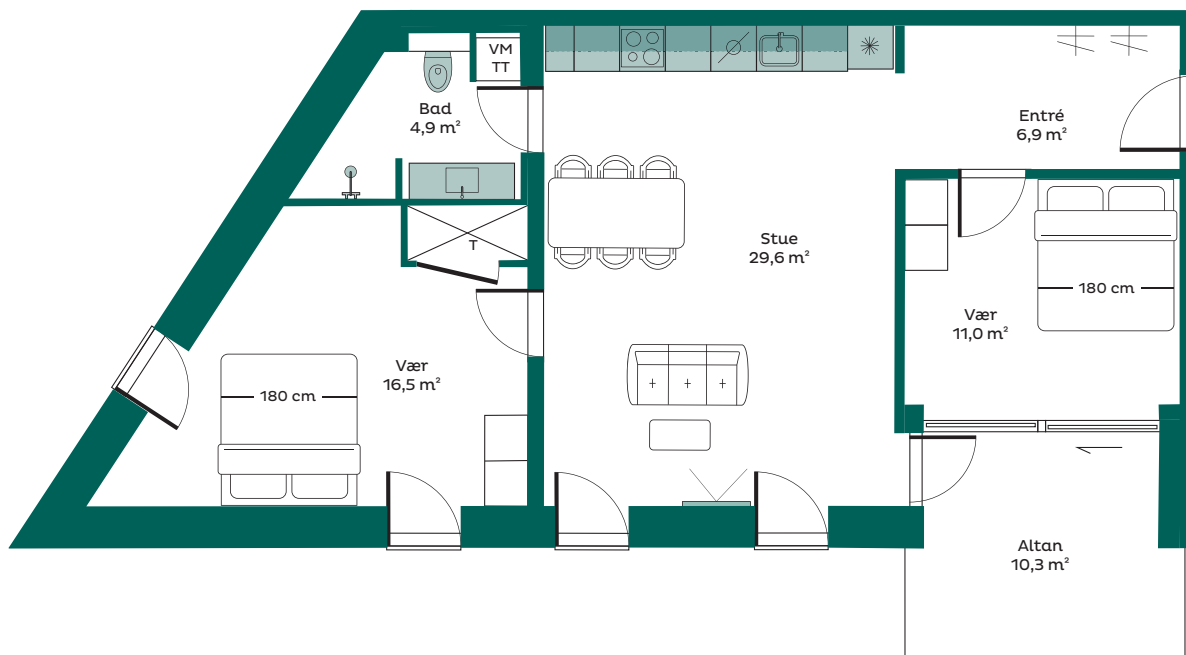
ETAGEOVERSIGT BYGNING D

PART.

ST., 1., 2.

3.





SIGNATURFORKLARING:

- VM = VASKEMASKINE
- TT = TØRRETUMBLER
- T = TEKNIK
- * = KØLESKAB
- Ø = OPVASKEMASKINE
- H = HØJSKAB
- = PLACERING AF LEJLIGHED

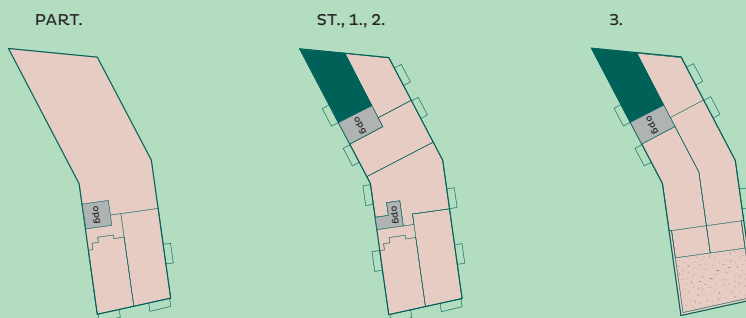


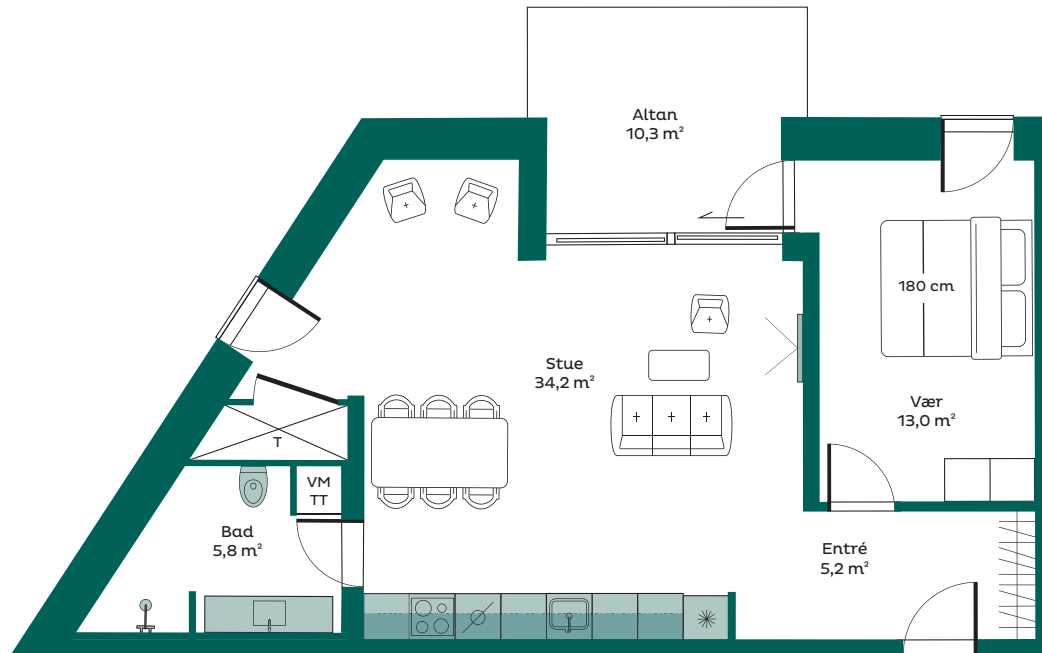
CERES PARK

Ceres Byen 54

Etage st., 1., 2., 3.
 Boligtype D3
 Lejlighed nr. 63, 69, 75, 81
 BBR-areal 97 m²
 Altan/terrasse 10 m²

ETAGEOVERSIGT BYGNING D





SIGNATURFORKLARING:

- VM = VASKEMASKINE
- TT = TØRRETUMBLER
- T = TEKNIK
- * = KØLESKAB
- Ø = OPVASKEMASKINE
- H = HØJSKAB
- = PLACERING AF LEJLIGHED

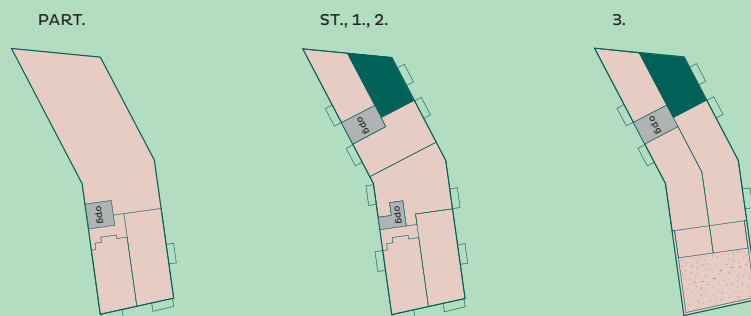


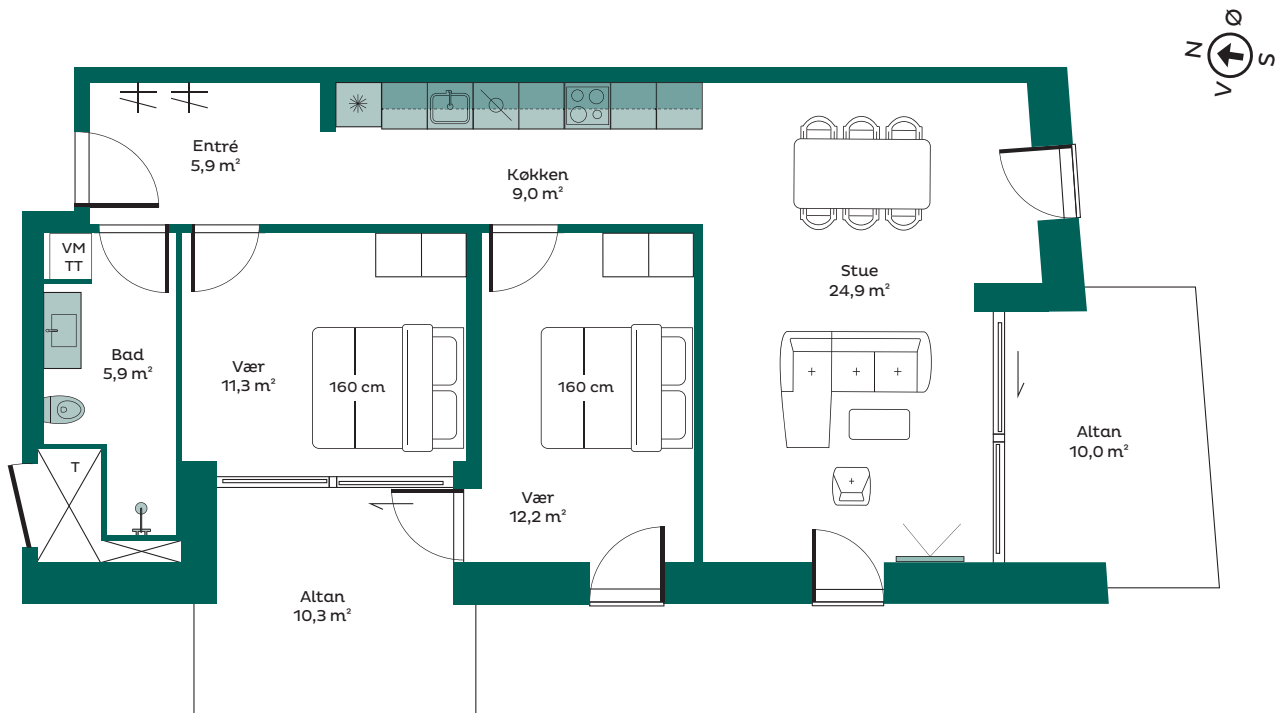
CERES PARK

Ceres Byen 54

Etage st., 1., 2., 3.
 Boligtype D4
 Lejlighed nr. 64, 70, 76, 82
 BBR-areal 84m²
 Altan/terrasse 10 m²

ETAGEOVERSIGT BYGNING D





SIGNATURFORKLARING:

- VM = VASKEMASKINE
- TT = TØRRETUMBLER
- T = TEKNIK
- * = KØLESKAB
- Ø = OPVASKEMASKINE
- H = HØJSKAB
- = PLACERING AF LEJLIGHED

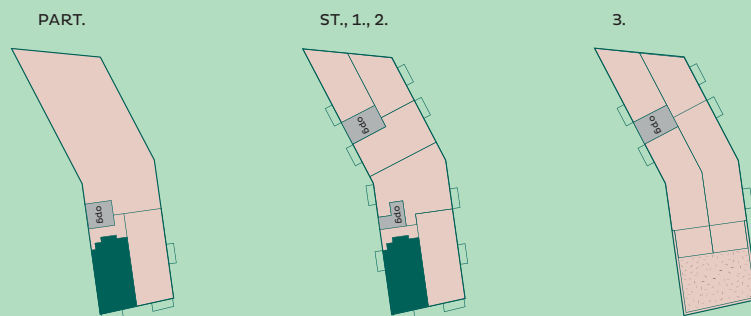


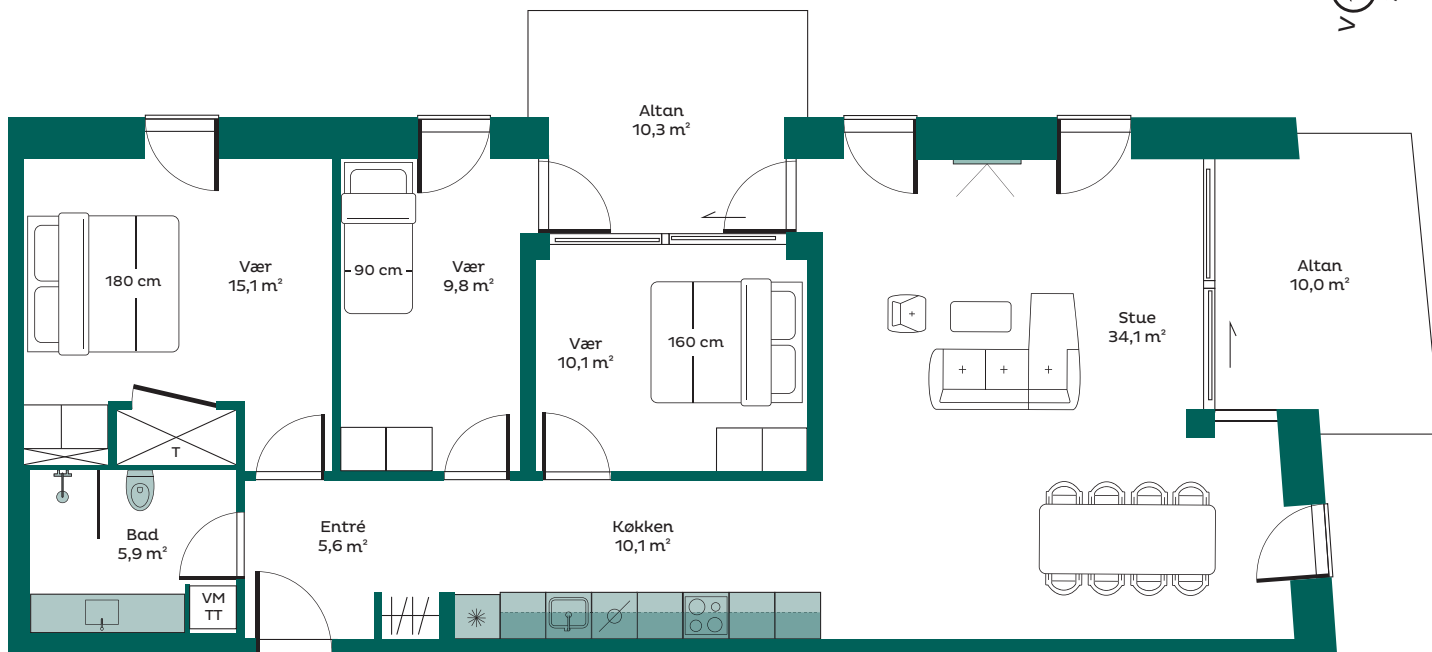
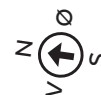
CERES PARK

Ceres Byen 52

Etage part., st., 1., 2.
 Boligtype D5
 Lejlighed nr. 62, 68, 74, 80
 BBR-areal 96 m²
 Altan/terrasse 10 + 10 m²

ETAGEOVERSIGT BYGNING D





SIGNATURFORKLARING:

- VM = VASKEMASKINE
- TT = TØRRETUMBLER
- T = TEKNIK
- * = KØLESKAB
- Ø = OPVASKEMASKINE
- H = HØJSKAB
- = PLACERING AF LEJLIGHED



CERES PARK

Ceres Byen 52

Etage part., st., 1., 2.
 Boligtype D6
 Lejlighed nr. 61, 67, 73, 79
 BBR-areal 120 m²
 Altan/terrasse 10 + 10 m²

ETAGEOVERSIGT BYGNING D

